



## Climax Home Portal Platform

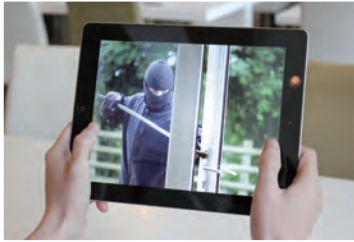
Envisage and Enable a Connected Future

# Climax Home Portal Platform

*An IP/GPRS-Based Solution to Deliver Smart Home and Mobile Control Services*



- **Reliable and high-capacity IP/GPRS platform**
- **Visual verification**
- **Home automation**
- **Mobile control**
- **Remote monitoring**
- **Energy management**
- **Location tracking**



The advancement of IP technology has created new challenges and opportunities for the security industry worldwide. While monitoring centers seek solutions to integrate IP/GPRS-based services such as visual verification and home automation, the popular use of mobile devices has also triggered end users' demand to directly view and control their homes from their smartphones or tablets.



The Climax Home Portal Platform (CHPP) is an IP/GPRS-based security management solution designed to meet these needs by maximizing the benefits of IP technology for both monitoring centers and end users. Home Portal Server, the CHPP's IP networking software, can be customized to work seamlessly with the infrastructure of monitoring centers, introducing new services yet allowing monitoring personnel to continue using their familiar operational platform.



# An All-in-One Solution for Security Professionals and Home Owners

The Climax Home Portal Platform provides monitoring centers and end users with new and convenient ways to manage home security and other services



## Benefits for the Monitoring Center

### High-Capacity IP/GPRS Platform

- Receive data from 10,000 to 100,000 security systems
- Operate all Climax control panels with IP/GPRS connectivity
- Store alarm videos/images on Home Portal Server for the CMS to view anytime
- ARN Gateway delivers alarm events in CID/SIA formats to the CMS

### Total Visual Monitoring Solution

- View images/videos or live videos when alarms occur
- Use visual verification to reduce fines and wasted resources caused by false alarms
- Send alarm alerts to customers via SMS messages, emails or push notifications and enable them to view alarm images/videos on mobile devices or PCs
- Real-time monitoring allows CMS to view images/videos of clients' homes and properties

### Home Automation

- Remotely control and monitor customers' home appliances for their comfort
- Enable customers to manage home appliances by themselves via mobile devices or PCs

### Energy Management

- Monitor customers' domestic energy consumption to strategically boost energy efficiency and reduce electricity bills

### Location Tracking

- View the GPS locations of Mobile PERS medical alarm users on Google maps

### Remote Management

- Remotely monitor and manage control panels, devices, events, areas, etc. via user-friendly administration dashboards

### Easy Programming and Maintenance

- Conveniently program, maintain and upgrade alarm systems through intuitive interfaces

### Increase in Recurring Revenue

- Offer popular self-monitoring solutions such as visual verification and mobile control to build customer loyalty, attract new clients and stimulate growth of recurring revenue



## Benefits for the End Users

### Mobile Control



Remotely manage your alarm system and home appliances via Vesta Home, the CHPP's mobile application, on your smartphone or tablet

### Total Visual Monitoring



Receive alarm images/videos for visual verification and view real-time images/videos of home and loved ones via mobile devices

### Alarm Notification



Receive alarm or status reports on your mobile device and respond immediately

### Home Automation



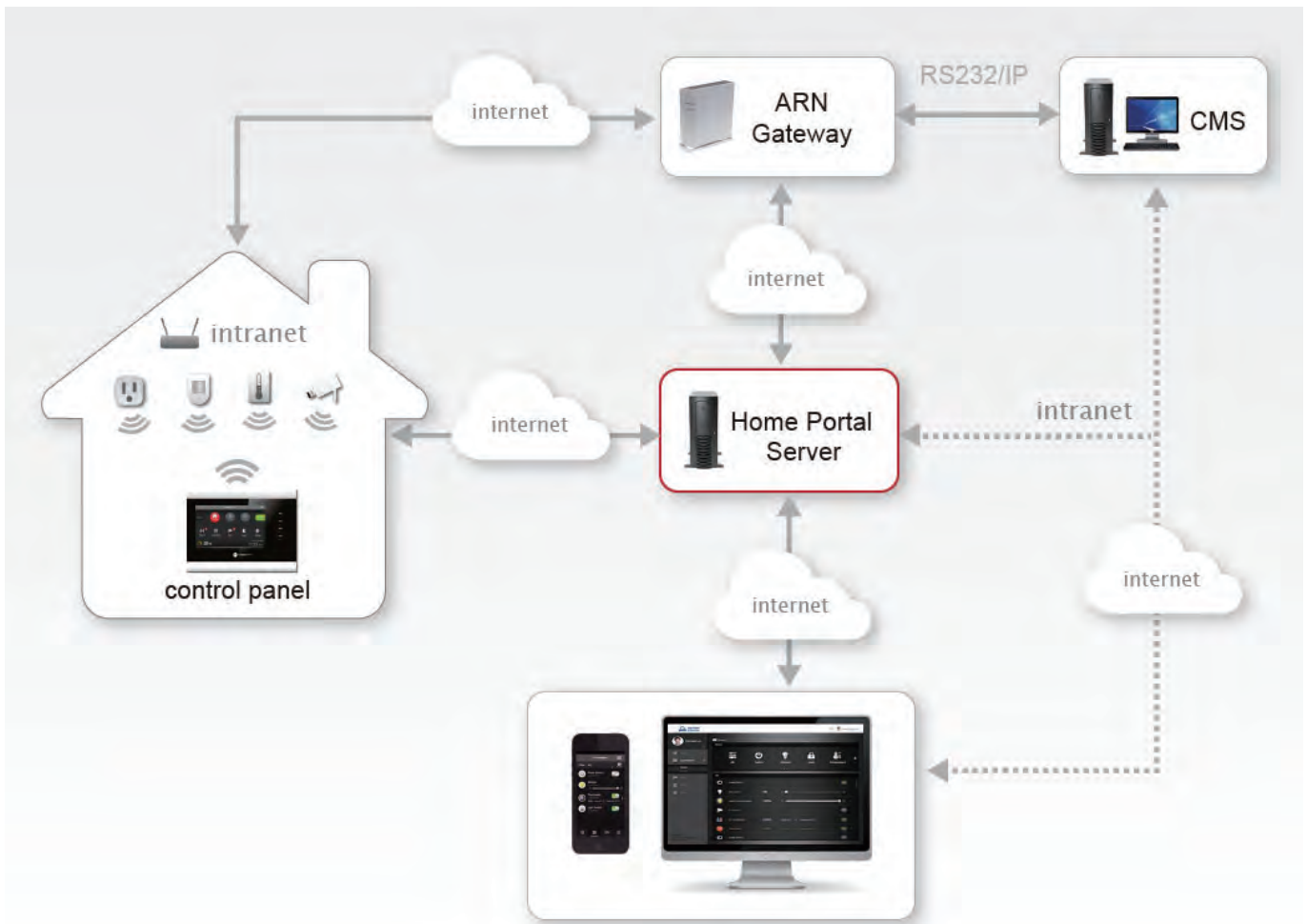
Create a program to automatically run home appliances, save energy, and enhance security, comfort and convenience

### Easy Programming



Adjust the settings of your alarm system or home appliances from your mobile device whenever needed

# How the Climax Home Portal Platform Works



## What is Home Portal Server?

Home Portal Server is the CHPP's IP networking software. It enables monitoring personnel to operate alarm systems via a web browser and end users to manage their homes via a mobile application.

### Server Installation

A web space is required for the setup of Home Portal Server. You can either rent a web space and install the server in your location or rent a server hosting service, which requires neither hardware setup nor maintenance. After you have acquired the web space and server, the Climax support team will install the software environment for you.

### Home Portal Application

End users can access Home Portal Server via a mobile application on iPhones, iPads or Android devices. Climax can customize the application for you according to your server information. Please provide us with your Apple and Android developer account information and we will put your own Home Portal app on Apple's App Store and the Google Play Store for your customers to download.



## ARN Gateway

ARN (Alarm Reception and Notification) Gateway provides the following services for the CHPP:

**SMS alarm reporting:** The gateway enables Home Portal Server to send SMS alarm reports and other notifications to end users via a local telecommunications network. You can activate the gateway's SMS service after inserting into the gateway a SIM card purchased from a local telecommunications provider.

**Safe Home Portal Server registration:** To access Home Portal Server's smart home services, end users need to register on the server's website. The gateway allows the server to send SMS authentication messages to end users after their registration, thus strengthening the security of using the server's services.

**Alarm reception:** The gateway receives event reports from Climax's IP/GPRS control panels and forwards the data in CID/SIA formats via RS232 or IP to the CMS.

# Making Simplicity the First Priority

The CHPP provides easy-to-use interactive interfaces for monitoring personnel and end users to manage security and smart home services. The platform can be accessed via a web browser or mobile application.

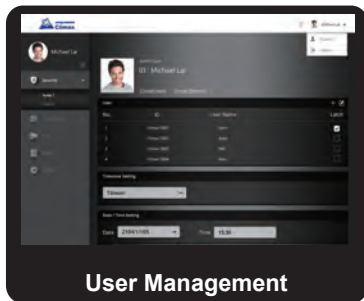


## Web Access

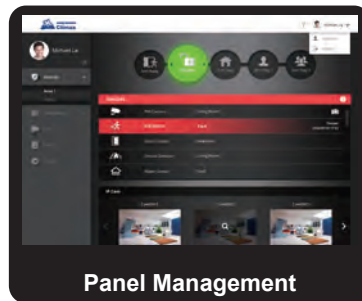
The CHPP's web browser offers three different interfaces for three types of account authorities: end users, dealers and administrators. These three levels serve different purposes.

- End user level: This level allows the end user to manage an individual alarm system, receive status reports, control system modes, adjust system settings, and operate devices.
- Dealer level: This level is designed for the dealer to monitor and manage the control panels registered under the dealer's name.
- Administrator level: This level is provided for the administrator to manage the entire Home Portal Server.

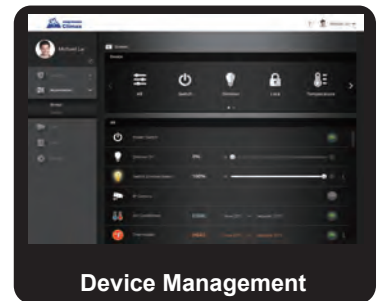
## The CHPP Administration Dashboards



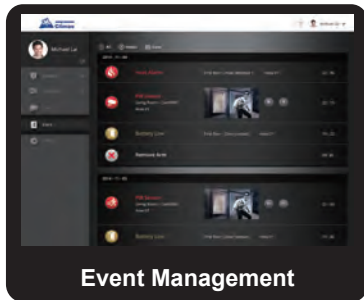
User Management



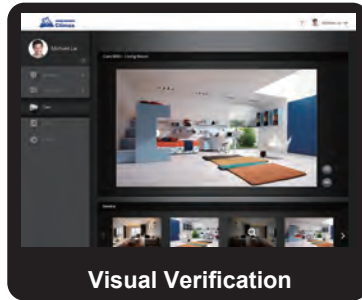
Panel Management



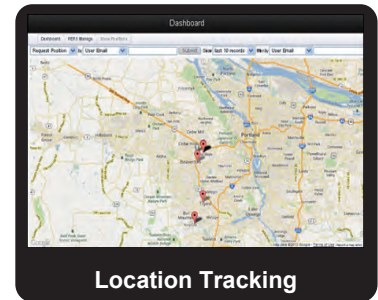
Device Management



Event Management



Visual Verification

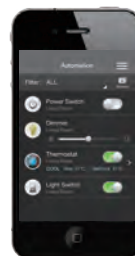


Location Tracking

## App Access



The CHPP's standard mobile application, Vesta Home, can be downloaded from the App Store or the Google Play Store. With this app the end user can manage his alarm system, receive event reports and view alarm images/videos on a smartphone or tablet.



# CHPP System Requirements and Specifications

## Home Portal Server



| Hardware requirements                      |  |
|--|--|
| <b>Server type</b>                         | Linux Server   |
| <b>CPU</b>                                 | Intel® Core™ i5 Processor or above (6M Cache, 2.8 GHz)   |
| <b>Memory</b>                              | 8GB RAM  |
| <b>Storage</b>                             | 1T SATA Hard Disk Drive  |
| Software requirements                      |  |
| <b>IP address</b>                          | One fixed IP address   |
| <b>Accounts &amp; passwords</b>            | SSL Telnet Login Account & Password for software installation<br>FTP Account & Password to upload data to a designated web space |
| Application requirements                   |  |
| <b>One Apple developer account</b>         | For the Push Notification Service and app publication on the App Store   |
| <b>One Android developer account</b>       | For app publication on the Google Play Store   |
| Other requirements                         |  |
| <b>One web space</b>                       | For server hosting   |
| <b>One SMS service account</b>             | To send SMS authentication, reports and commands   |
| <b>One email account</b>                   | To send email authentication and reports (Gmail SMTP recommended)  |
| Specifications                             |  |
| <b>NIC supported data rates</b>            | 10/100/1000Mbps (depending on the hardware)  |
| <b>Number of control panels supported</b>  | 10,000 to 100,000 (depending on internet bandwidth)  |
| <b>Security system reporting protocols</b> | SIA/CID over IP  |
| <b>Notification dispatcher</b>             | Via SMS, Email or push notifications   |
| <b>Event logs</b>                          | One million  |
| <b>Image/video storage</b>                 | Local storage  |

# CHPP System Requirements and Specifications

## ARN Gateway



| Specifications                             |  |
|--|--|
| <b>Power supply</b>                        | 12V 1A DC adaptor  |
| <b>Backup power (optional)</b>             | Rechargeable 4.8V AA Ni-MH battery pack                                |
| <b>SIM card</b>                            | Purchased by the customer from a local telecommunications provider     |
| <b>NIC supported data rates</b>            | 10/100Mbps   |
| <b>Number of control panels supported</b>  | 10,000 to 100,000 (depending on internet bandwidth)                    |
| <b>Security system reporting protocols</b> | CID/SIA over IP  |
| <b>Automation software communication</b>   | CID/SIA protocol over RS232/IP   |
| <b>Notification dispatcher</b>             | Via SMS messages (when the gateway is connected to Home Portal Server) |
| <b>Event logs</b>                          | 100  |
| <b>Operating temperature</b>               | -10°C to +45°C   |
| <b>Operating humidity</b>                  | Up to 85% non-condensing   |
| <b>Dimensions</b>                          | 186.3 mm x 130 mm x 30.3 mm  |



**Climax Technology Co., Ltd.**

Website: [www.climax.com.tw](http://www.climax.com.tw)

Email: [sales@climax.com.tw](mailto:sales@climax.com.tw)

Copyright © 2015 Climax Technology Co., Ltd.

All Rights Reserved.

Feb. 16, 2015